

ZONE	REV	DESCRIPTION	DATE	APPROVED

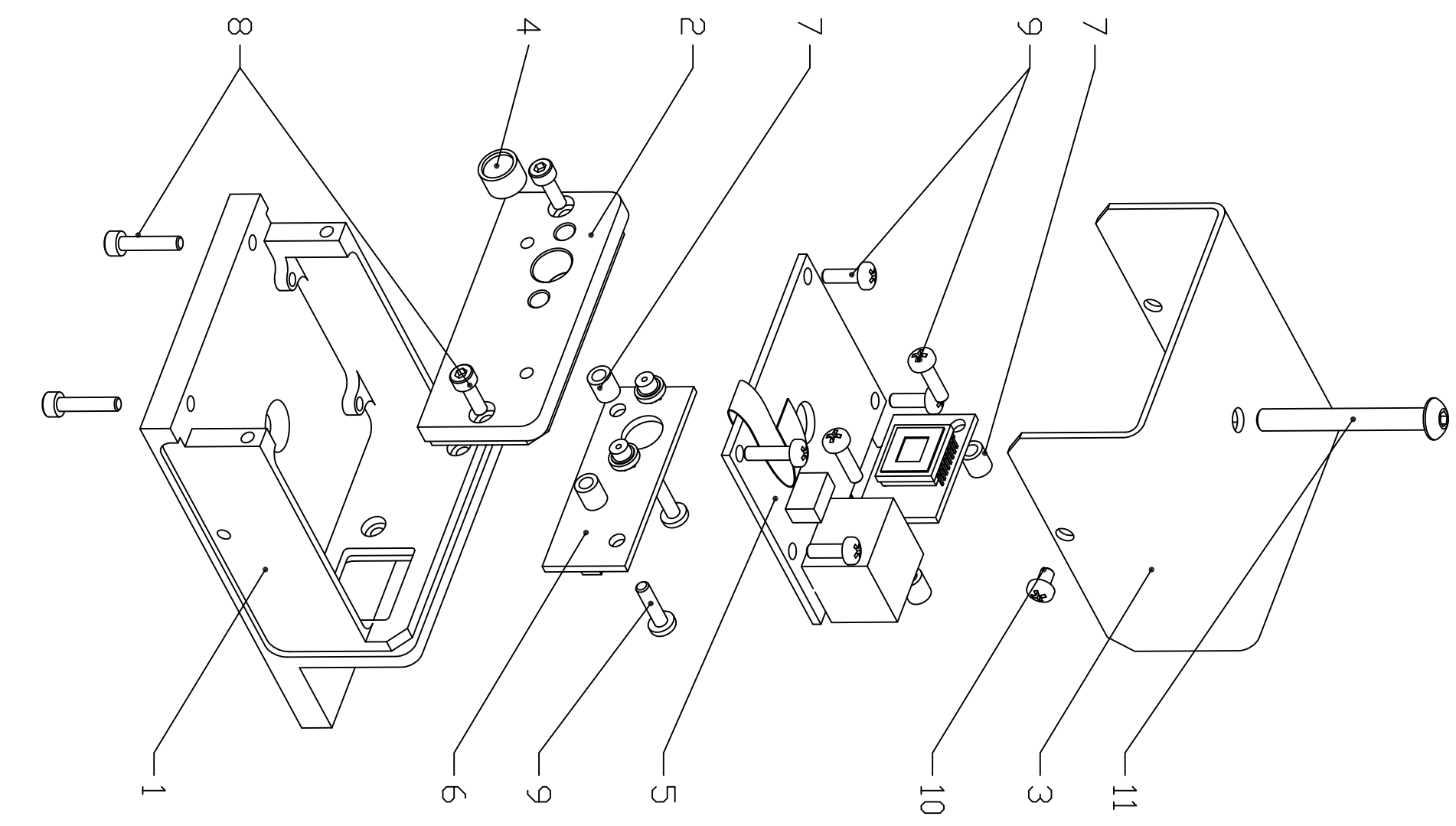


FIG./REF.#	QTY.	UOM.	PART NAME	MATERIAL	PART DESCRIPTION	REF. SHEET/DWG.
11	1	EA	SCREW	316 ST/STEEL	PAN FEAD. M4 Thread, 40mm Length, 7mm Pitch	
10	2	EA	SCREW	316 ST/STEEL	PAN FEAD. M2.5 Thread, 5mm Length, 45mm Pitch	
9	8	EA	SCREW	316 ST/STEEL	PAN FEAD. M2.5 Thread, 8mm Length, 45mm Pitch	
8	4	EA	SCREW	316 ST/STEEL	SOCKET HEAD, M2.5 Thread, 8mm Length, 45mm Pitch	
7	4	EA	STANDOFF	NYLON	METRIC SPACER, 4.5mm ID, 5mm LENGTH	
6	1	EA	CIRCUIT BOARD			
5	1	EA	PCBOUT BOARD			
4	1	EA	LENS HOLDER	BRASS	ASSEMBLY	500100100
3	1	EA	COVER	ALUMINUM	BLACK ANODIZED	500100003
2	1	EA	FACE	ALUMINUM	BLACK ANODIZED	500100002
1	1	EA	BASE	ALUMINUM	BLACK ANODIZED	500100001

PARTS LIST

UNLESS OTHERWISE SPECIFIED:

PERMISSIBLE VARIATION IN MM DIMENSIONS WITHOUT TOLERANCES

DIMEN	< 3	3-6	6-10	10-18	18-30	30-50	50-80	80-120
TOLER	±0.05	±0.06	±0.075	±0.09	±0.105	±0.125	±0.150	±0.175
DIMEN	120-180	180-250	250-315	315-400	400-500	500-630	630-800	800
TOLER	±0.200	±0.230	±0.260	±0.295	±0.315	±0.350	±0.400	±0.500

ANGLE: ±1° ±30' ±20' ±10' ±5'

WALDES ACCORDING SHWT SIZE

SURFACE TEXTURE: Ra 12.5

TOLERANCES ARE NOT ACCUMULATIVE

10. ALL WELDING TO CONFORM TO LATEST AWS STANDARDS.

NAME	DATE	DATE
DRAWN	03/02/15	
CHECKED		
APPROVED		

PROJECT NUMBER: 500

DRAWING NUMBER: 500.10.00.00

SHEET: 1 OF 1

REVISION: A

ATLAS BRANDTIS

NSW ALIGNMENT NBCAM BLACK ASSEMBLY

HIGH ENERGY PHYSICS LABORATORY

6 5 4 3 2 1