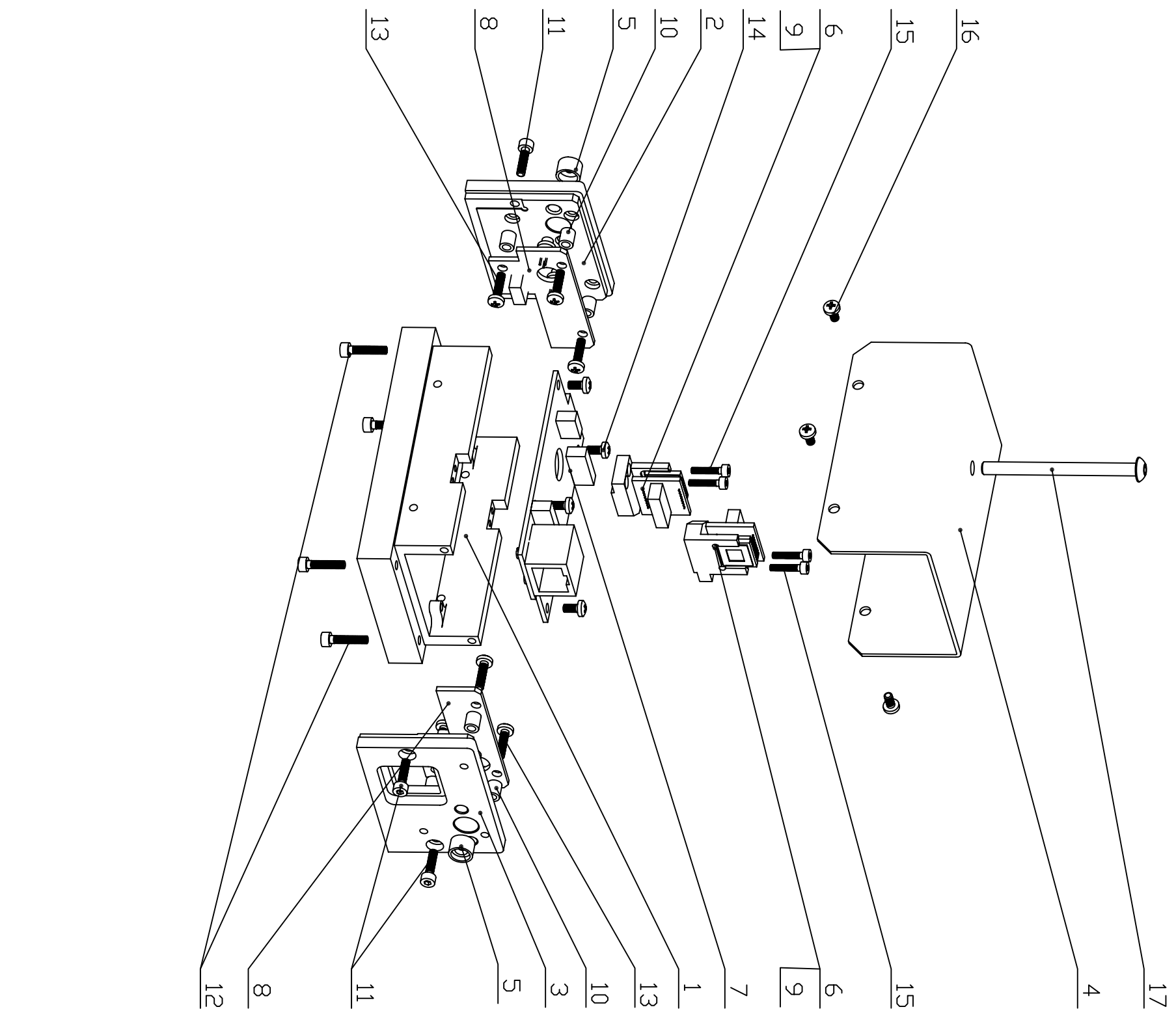


ZONE	REV	DESCRIPTION	DATE	APPROVED



PNL/REF #	QTY	UOM	PART NAME	MATERIAL	PART DESCRIPTION
17	1	EA	SCREW	316 ST/STEEL	SOCKET HEAD, M4 Thread, 60mm Length, 7mm Pitch
16	4	EA	SCREW	316 ST/STEEL	PNL FEAD, M2.5 Thread, 5mm Length, .45mm Pitch
15	4	EA	SCREW	316 ST/STEEL	SOCKET HEAD, M2 Thread, 10mm Length, .45mm Pitch
14	4	EA	SCREW	316 ST/STEEL	PNL FEAD, M2.5 Thread, 8mm Length, .45mm Pitch
13	6	EA	SCREW	316 ST/STEEL	PNL FEAD, M2.5 Thread, 10mm Length, .45mm Pitch
12	4	EA	SCREW	316 ST/STEEL	SOCKET HEAD, M2.5 Thread, 12mm Length, .45mm Pitch
11	4	EA	SCREW	316 ST/STEEL	SOCKET HEAD, M2.5 Thread, 10mm Length, .45mm Pitch
10	6	EA	STANDOFF	ALUMINUM	METRIC SPACER, 4.5mm OD, 5mm LENGTH
9	2	EA	BRCUT BOARD		CCD HEAD
8	2	EA	BRCUT BOARD		LASER BOARD
7	1	EA	BRCUT BOARD	ALUMINUM	MAIN BOARD
6	2	EA	COB FRAME	ALUMINUM	BLACK ANODIZED
5	2	EA	LENS HOLDER	BRASS	ASSEMBLY
4	1	EA	COVER	ALUMINUM	BLACK ANODIZED
3	1	EA	FLANGE-R	ALUMINUM	BLACK ANODIZED
2	1	EA	FLANGE-F	ALUMINUM	BLACK ANODIZED
1	1	EA	BASE	ALUMINUM	BLACK ANODIZED

UNLESS OTHERWISE SPECIFIED:

DIMENSIONS ARE IN MM.		PERMISSIBLE VARIATION IN MM DIMENSIONS WITHOUT TOLERANCES	
DIMEN < 3	3-6	6-10	10-18
3-6	6-10	10-18	18-30
6-10	10-18	18-30	30-50
10-18	18-30	30-50	50-80
18-30	30-50	50-80	80-120

1. DIMENSIONS ARE IN MM.  
2. MACHINE SURFACES TO BE FLAT, SQUARE, PARALLEL, & CONCENTRIC WITHIN .020 FOR 100 MM OR .020 TIR AS APPLICABLE.  
3. MARK ALL DETAILS (EXCEPT COMMERCIAL PARTS) WITH DIM.  
4. ITEM NUMBER.  
5. HOLE NUMBER.  
6. TAPED HOLES: MIN DEPTH 2.0 x DIA.  
7. CHAMFER CORNERS: 28 x 45° CHAMFER.  
8. FILLET RADIUS: R1.0.  
9. TAPERED HOLES: MIN DEPTH 2.0 x DIA.  
10. ALL WELDING TO CONFORM TO LATEST AWS STANDARDS.  
11. DO NOT SCALE DRAWING.  
12. CENTERS PERMISSIBLE.  
13. SURFACE TEXTURE: Ra 1.25  
14. TOLERANCES ARE NOT ACCUMULATIVE.

DATE	03/09/18
NAME	Andy
DRAWN	Andy
CHECKED	Andy
APPROVED	Andy

ATLAS BRANDTIS  
NSW ALIGNMENT D-BCAM, BLACK ASSEMBLY

DRAWING NUMBER: 500.13.00.00  
SHEET: 1 OF 1  
REVISION: A

6 5 4 3 2 1

A B C D